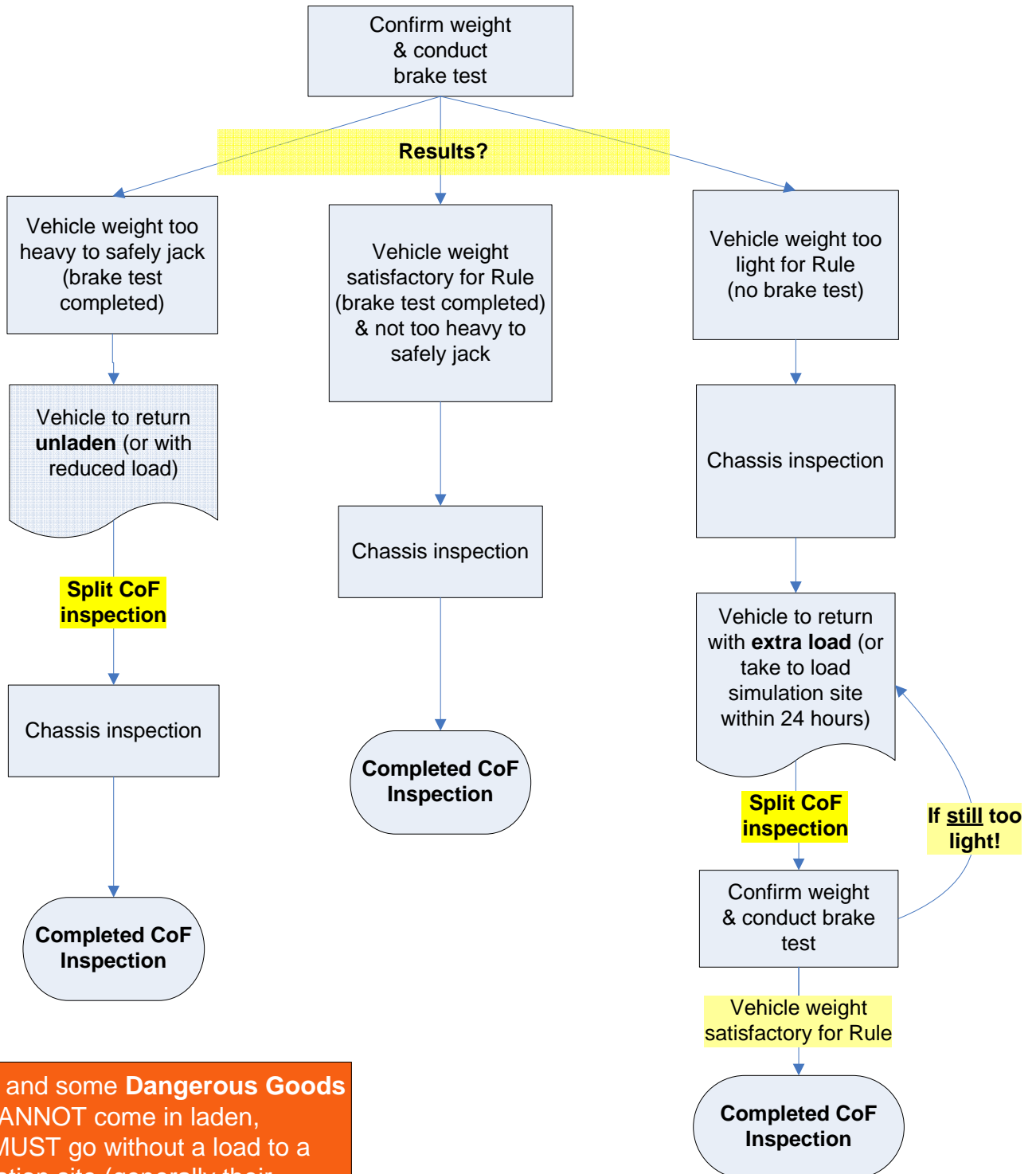


Presenting your vehicle at a VTNZ outwork location for Certificate of Fitness inspection
Vehicles need to be brought in LADEN
as simulated load weighing is **NOT** available (eg, most VTNZ outwork locations)

Most outwork locations use a mobile RBM so will set up at start of lane
(on Page 2 is the process for an RBM at the end of the lane)

RBM at **START**
of lane

No weight cert required

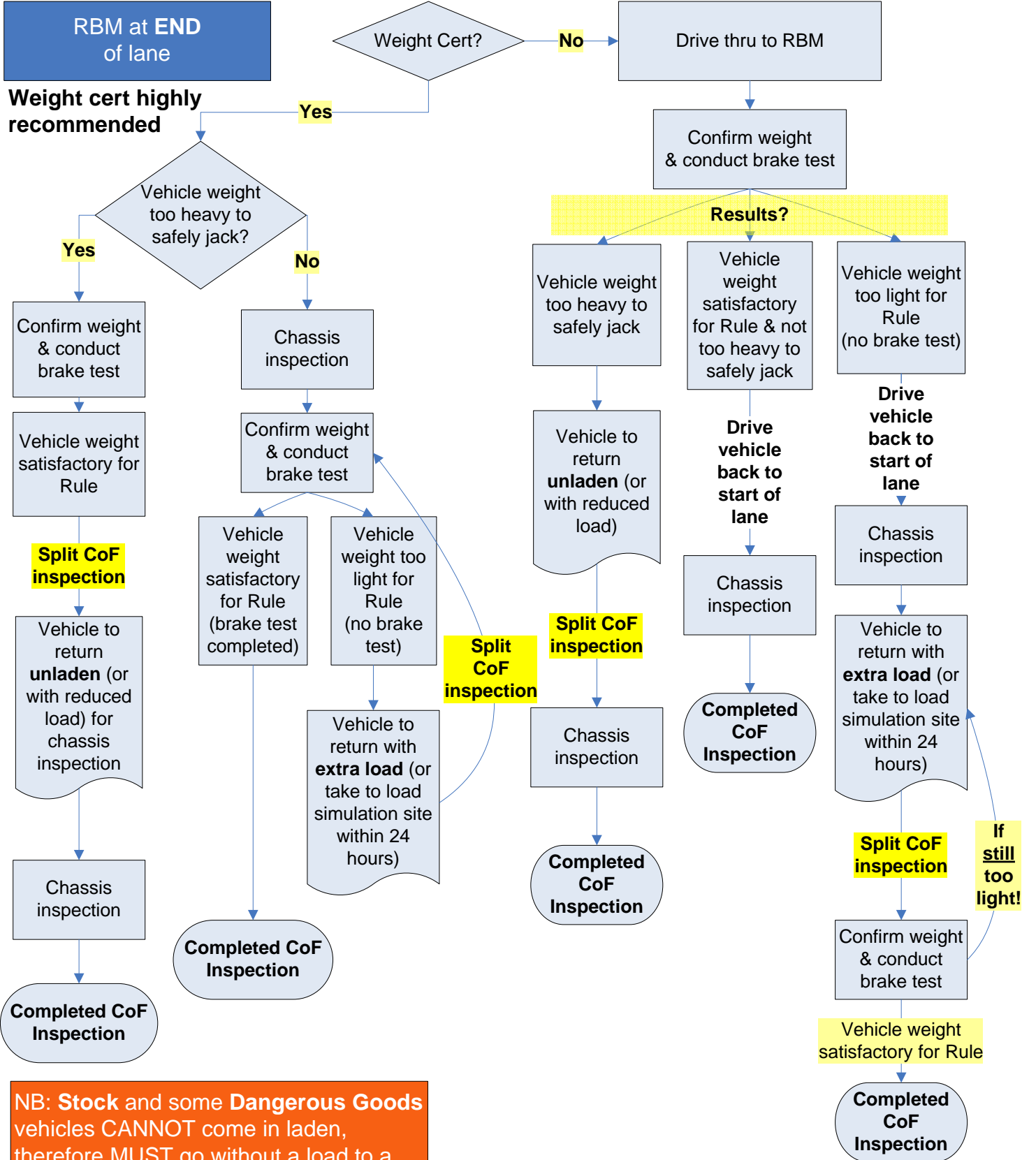


NB: Stock and some Dangerous Goods vehicles CANNOT come in laden, therefore MUST go without a load to a load simulation site (generally their closest VTNZ station)

RBM = Roller Brake Machine

Presenting your vehicle at a VTNZ outwork location for Certificate of Fitness inspection
Vehicles need to be brought in LADEN
 as simulated load weighing is **NOT** available (most VTNZ outwork locations)

A select few outwork locations have an RBM which has to be set up at **end of lane**
 (see Page 1 for the process for an RBM at the start of the lane)



NB: Stock and some Dangerous Goods vehicles CANNOT come in laden, therefore MUST go without a load to a load simulation site (generally their closest VTNZ station)
 RBM = Roller Brake Machine

For more information, contact:
Brian Sara, VTNZ Operations
Ph: 04 495 2505